



It pays to shop for medical care!

Member Rewards helps you compare costs for procedures and services, save money and earn cash rewards.

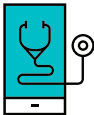
MRI: \$1,500
Cash Back: \$150

MRI: \$3,000
Cash Back: \$50

Medical procedure costs vary by location.

With Member Rewards, you can shop for medical care, compare costs and maybe even earn a cash reward. It is quick and easy to shop in-network for common medical procedures like screenings, scans, lab/blood draws and more. The Member Rewards program is part of your health plan benefits and administered by Sapphire Digital.

How it works



Step 1

Call a Benefits Value Advisor or search online via Provider Finder® to find a reward eligible location for your procedure or service.



Step 2

Get the procedure or service at your chosen reward eligible location.



Step 3

Receive a cash reward by check, which will be mailed directly to your home, after your claim is paid and the location is verified as reward eligible.

To get started, call a Benefits Value Advisor (BVA) at the number on the back of your member ID card. Or shop online with Provider Finder by visiting bcbsil.com, register or log in to Blue Access for MembersSM and select "Find Care."

Sapphire Digital is an independent company that has contracted with Blue Cross and Blue Shield of Illinois (BCBSIL) to administer the Member Rewards program for members with coverage through BCBSIL. Reward-eligible procedures and reward amounts are subject to change. Eligibility for rewards is subject to terms and conditions of the Member Rewards program. Amounts you receive through Member Rewards may be taxable. BCBSIL does not provide tax advice, so please contact your HR or tax advisor for more information. Members that have primary coverage with Medicaid or Medicare are not eligible to receive incentive rewards under the Member Rewards program.

BCBSIL makes no endorsement, representations or warranties regarding third-party vendors and the products and services offered by them.

Blue Cross and Blue Shield of Illinois, a Division of Health Care Service Corporation, a Mutual Legal Reserve Company, an Independent Licensee of the Blue Cross and Blue Shield Association